



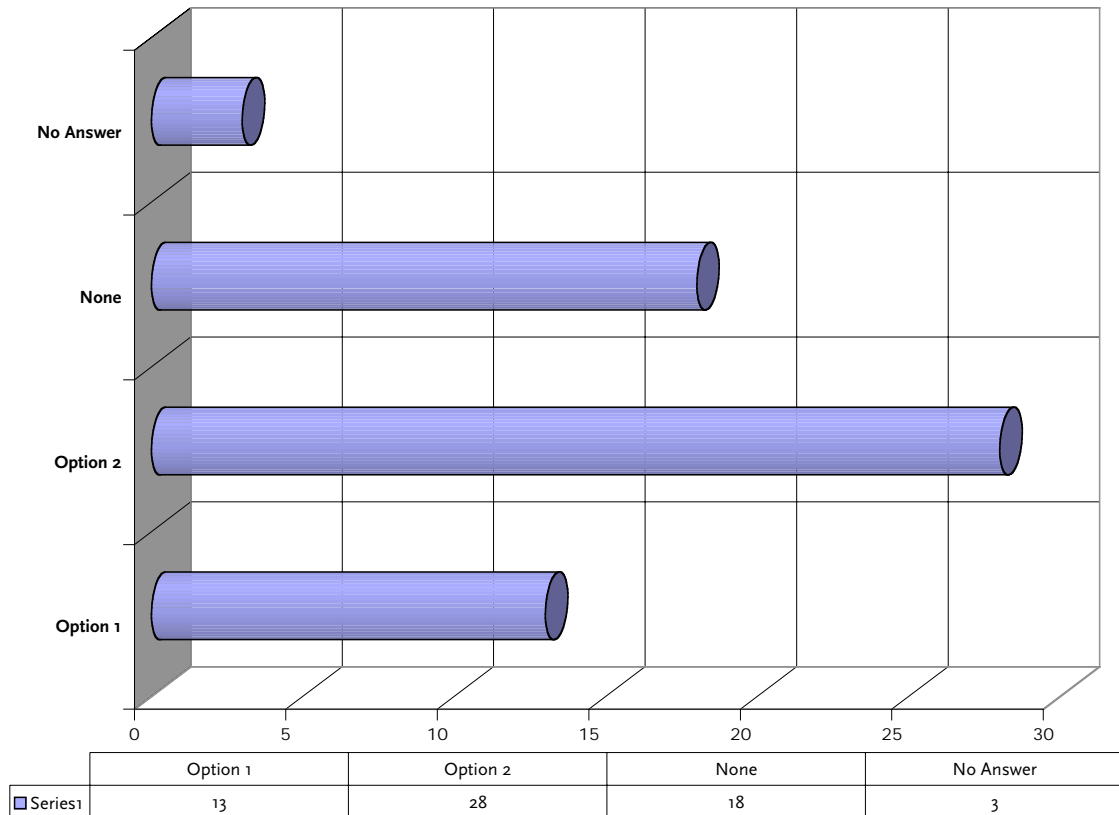
# MEMO

Date: 19 April 2006 Tel: 503.827.4155, Fax: 503.827.3641  
RE: TGM.QuickResponse\_Cannon Beach Public Workshop 2 Evaluations Summary  
To: Marcy McInelly, Urbsworks, Inc; Rainmar Bartl, City of Cannon Beach  
Cc:  
From: Ben Nielsen, Urbsworks, Inc

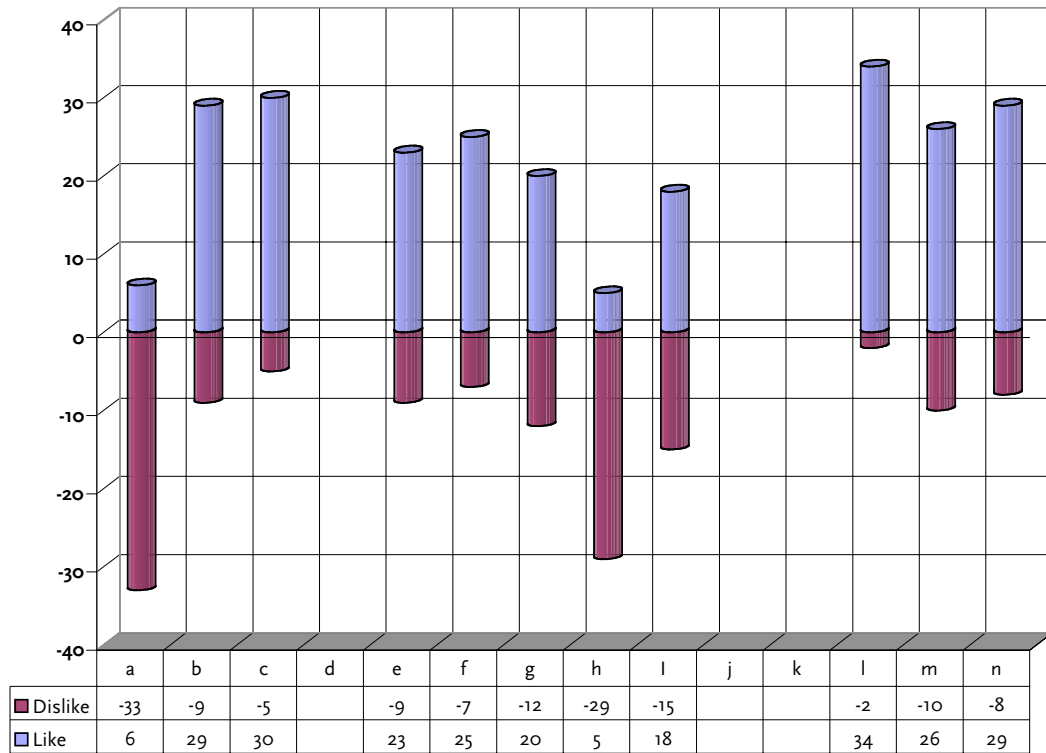
## Public Workshop 2 Evaluations Summary

### Alternative D: Spruce Street and 2<sup>nd</sup> Street Parking and Pedestrian Improvements

1. Overall, which option do you prefer from Alternative D?



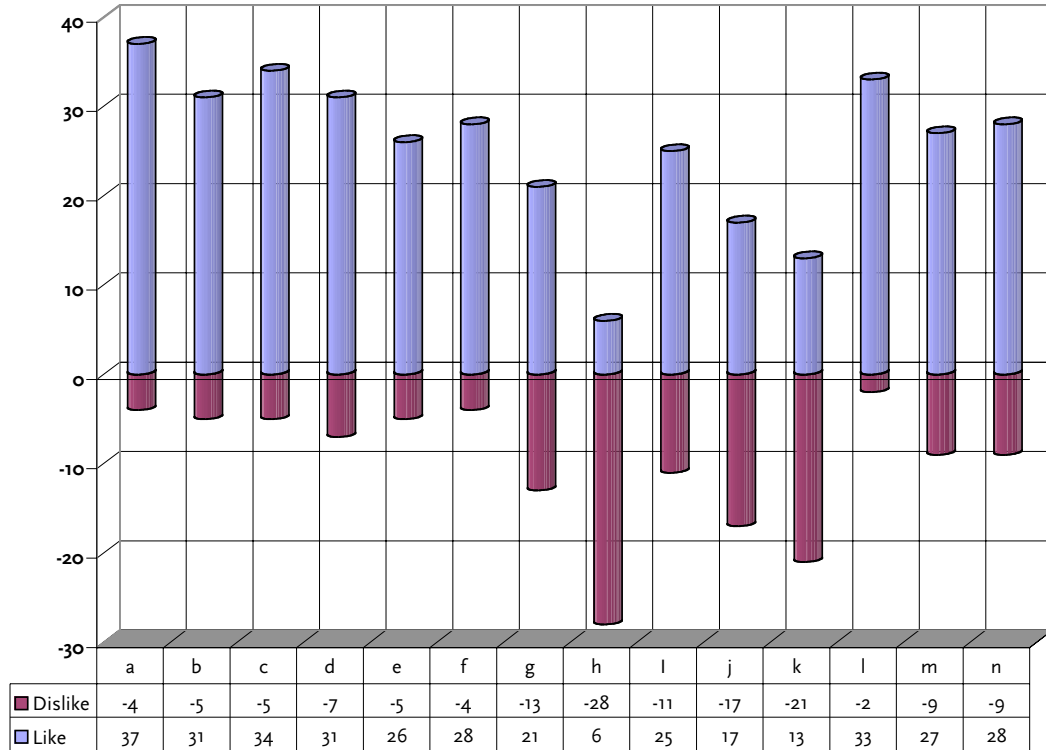
2. Which elements of any option do you like and dislike the most?  
 a. Option 1



Option 1 Key	
<b>a.</b>	Replace parking on east side of Spruce between 1 <sup>st</sup> and 2 <sup>nd</sup> with sidewalk
<b>b.</b>	Sidewalk on west side of Spruce between 1 <sup>st</sup> and 2 <sup>nd</sup>
<b>c.</b>	Midblock “library” crossing
<b>d.</b>	
<b>e.</b>	Extended sidewalk on the north side of 2 <sup>nd</sup>
<b>f.*</b>	Extended sidewalk on the south side of 2 <sup>nd</sup>
<b>g.</b>	Expanded parallel parking along north side of 2 <sup>nd</sup>
<b>h.</b>	Reconfigured parallel parking on Spruce north of 2 <sup>nd</sup>
<b>i.</b>	Expanded parking on upland area adjacent to lagoon; reconfigure recycling area to accommodate yard debris collection
<b>j.</b>	
<b>k.</b>	
<b>l.</b>	Wetland overlooks along Spruce
<b>m.</b>	1 <sup>st</sup> Street boardwalk to lagoon trail
<b>n.</b>	Pedestrian trail along west side of lagoons

\* Construction of a sidewalk on the south side of 2<sup>nd</sup> Avenue east of Spruce Street is no longer a viable option due to the proximity of the wetlands.

**b. Option 2**



Option 2 Key			
<b>a.</b>	Boardwalk sidewalk on east side of Spruce between 1 <sup>st</sup> and 2 <sup>nd</sup> ; keep existing parking	<b>h.</b>	Reconfigured parallel parking on Spruce north of 2 <sup>nd</sup>
<b>b.</b>	Sidewalk on west side of Spruce between 1 <sup>st</sup> and 2 <sup>nd</sup>	<b>i.</b>	Expanded parking on upland area adjacent to lagoon
<b>c.</b>	Midblock “library” crossing	<b>j.</b>	Seasonal parking on minimal lagoon fill
<b>d.</b>	Midblock “post office” crossing	<b>k.</b>	Utilization of lagoon for yard debris collection
<b>e.</b>	Extended sidewalk on the north side of 2 <sup>nd</sup>	<b>l.</b>	Wetland overlooks along Spruce
<b>f.*</b>	Extended sidewalk on the south side of 2 <sup>nd</sup>	<b>m.</b>	1 <sup>st</sup> Street boardwalk to lagoon trail
<b>g.</b>	Expanded parallel parking along north side of 2 <sup>nd</sup>	<b>n.</b>	Pedestrian trail along west side of lagoons

\* Construction of a sidewalk on the south side of 2<sup>nd</sup> Avenue east of Spruce Street is no longer a viable option due to the proximity of the wetlands.

**c. Three people said they like none of the elements.**

## Selected Quotations

- {None} “Any of these ‘improvements’ would encourage more visitors which we have too many of already. ... There is a feeling of safety here except when the crowds come—then it is difficult and irritating to try to get through town.”
- {Option 2} “Serious concern about the number of parking places removed from the pool over the last 10 years. ... It seems appropriate and balanced to provide 50+ back into the pool with option 2—PLEASE! ... The removal of spaces has been for good reason, but we have an opportunity to give some back to the business community with minimal impact on the lagoons. PLEASE!”
- {None} No options are preferred—why? Because laudable pedestrian enhancements are too tied in with moving parking spaces to the lagoon area. How much clearer can it be made? Public patience in accommodating more traffic is at an end!! ... I find it somewhat insulting that the overwhelming public support for wetlands restoration has been simply ignored.”
- {None} “No need to expand parking. The city has room on dry land somewhere to put the land debris. We wanted the expansion of wetland option from the first meeting. Where did that option go?”
- {Option 2} Do not lose parking for safety when it hasn’t been an issue. Option 2 seems like a good compromise—gain parking and improve pedestrian access. There will never be enough parking—improving the access for pedestrians is a better approach.”
- {Option 2} “As long as the remainder of the lagoon is left accessible for future use, or not use, as the future may bring. In other words, it is irresponsible to expand the wetlands into the area of the lagoon. ... Parking is important not so much numerically but as a level of comfort...”
- {None} “In general, anything that can be done to make our village more ‘quaint’ like restoring wetlands, preserving open space, making Cannon more pedestrian (and ADA, I might add) friendly, turning down the lights, lowering the thermostat, soft music, and candlelight, etc. Let’s develop what makes us different. It’s good for business.”
- {Option 2} “We need more parking options. More and larger busses and motorhomes will come no matter what is or is not planned. Pedestrian access is very desirable—but all those pedestrians arrive by vehicle.”
- {Option 2} “We need to find ways to create more parking in downtown so people don’t park in the residential areas.”
- {Option 2} “It would appear that this option is a decent and rational compromise.”
- {Option 2} “Both as a resident and business person, my concerns are balancing the health of the environment, business, and residential community. For me that means we have a rare opportunity to over time return most of the lagoon acreage to wetlands while at the same time adding parking spaces for both residents and visitors to the downtown area.”
- {Option 1} “This seems to satisfy everyone—not intrusive into the lagoon and the sidewalk view decks will be nice. ... Thank you for not trading the lagoon for the sake of more cars. The cars would fee our city coffers, but the birds in the lagoons feed our souls.”
- {None} “I am interested in a more environmental alternative. I do not believe that we require any more parking lots nor that Cannon Beach needs to continue to ‘grow.’ This is a very successful and wealthy town and we do not need ‘more.’”
- {None} “Neither option addresses the question of what is the best use of the existing lagoon. In my opinion, the best option would be to restore the lagoon to its original wetlands status. This is a unique opportunity to demonstrate that Cannon Beach is a progressive, environmentally-sensitive community.”
- {Option 2} “Moving yard waste to this area [lagoon fill] would be unsightly.”
- {Option 1} “Some net gain of parking can be accomplished with Option 1 if we do not eliminate existing parking along Spruce. Pedestrian improvements around lagoon will only be of value with wetland restoration. Some net gain of parking can be accomplished with Option 1 if we do not eliminate existing parking along Spruce.”
- {Option 1} “I really like the concentration on pedestrian circulation rather than parking. I am, however, very disappointed to see no lagoon restoration included. ... I love the idea of removing

parking from Spruce along Little Pompey for safety and aesthetic reasons. If we made a boardwalk instead of a sidewalk, however, there might be more room for bicycles on the pavement. ... I would like to keep the current Don Thompson Memorial Viewing Platform, but if it has to be rebuilt or move, for ADA compliancy, I'd like to see a split-level that had a low and high option (the raised platform is much better for birding!).”

- {Option 2} “I am not in favor of any plan that removes parking from Spruce Street—regardless of whether it is relocated to another area. Parking in Cannon Beach is a problem on most weekends and all days from June 15-September 15 and needs to be increased in the city core, not decreased. ... The construction of wetland overlooks and a trail through the wetlands is not a good idea—it would lead to damage to the wetlands by those visitors who are not good stewards of the land.”
- {Option 2} “Cannon Beach needs the most parking the city can get and maintain the elements that make the city unique.”
- {Option 2} “One idea presented to us was to mitigate some of the wetlands. This could be achieved by using some of the lagoons area and instead, expand the parking lot to the south of the chamber, making all the wetlands merge together and making the parking closer to town. This does seem like a win-win solution, adding more parking closer to town, and keeping the wetlands where the wildlife is disturbed less and not trampled on.”

**Common Themes: These are elements or ideas with which the majority of respondents agree, either for or against a proposal in the design alternatives.**

- Preserve existing head-in parking on Spruce Street north of 2<sup>nd</sup> Street both for business and residents to have more spaces and out of concern that waiting for people to parallel park would back up traffic.
- Preserve existing parking on east side of Spruce Street between 1<sup>st</sup> and 2<sup>nd</sup> Streets.
- In general, residents are very pleased to see the focus more on pedestrian circulation than on dramatically increasing the amount of parking.

**Split Views: These are elements or ideas with which there is conflict amongst the respondents and no clear agreement one way or another.**

- Convert existing lagoon into restored wetlands with no fill of any kind.
- Minimal fill of lagoon is acceptable when coupled with wetland restoration.
- Minimal fill of lagoon is acceptable as long as the remainder is left as is.
- Some think that parking on east side of Spruce between 1<sup>st</sup> and 2<sup>nd</sup> should be redesigned to allow for angle parking, but most people view retaining the parking there as important.

**Other Ideas not included in Alternative D:**

- Design 1<sup>st</sup> Street boardwalk to lagoon to allow for passage of elk underneath.
- Several residents mentioned wanting to see angled parking on the east side of Spruce.
- Many residents expressed the desire to see the lagoon restored to be a part of Little Pompey.
- Design a “vegetated buffer” of shrubs and other plants “to minimize disturbance to wildlife, especially by dogs, and to provide nesting areas for bush and ground nesting birds” along the wetlands trails.
- Move the recycling area to the east side of Hwy 101, maybe the RV area.
- If the Don Thompson Memorial Viewing Platform must be rebuilt, build it with two levels to satisfy both ADA and to keep a higher viewing option.