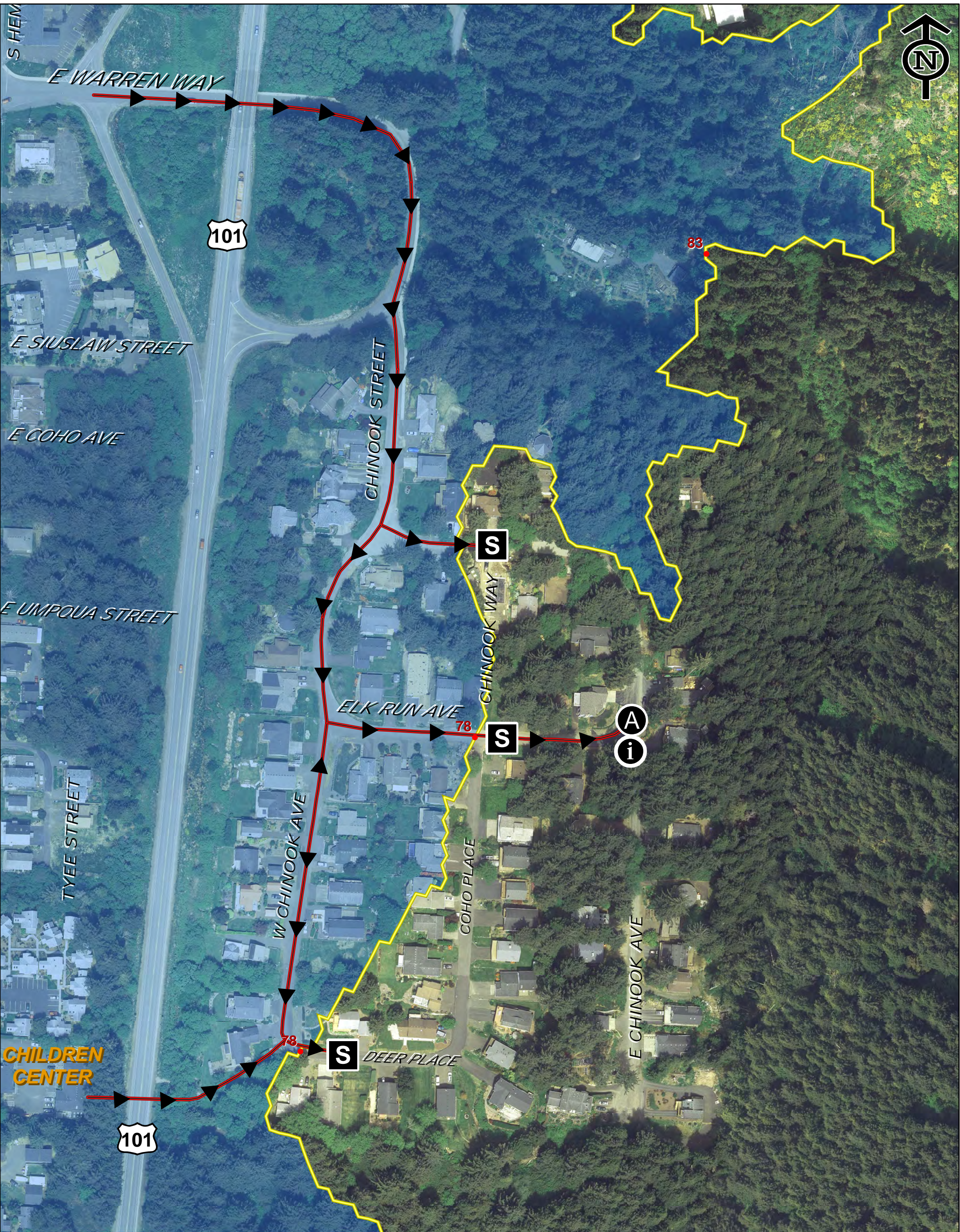


Tsunami Evacuation: Pedestrian Route

Haystack Heights

ER-9



Tsunami Evacuation Pedestrian Map Legend

- Local Cascadia Earthquake and Tsunami Evacuation zone for a local tsunami from an earthquake at the Oregon coast.
- Tsunami Inundation Zone
- Spot Elevation

- #### Pedestrian Features
- Pedestrian Evacuation Route
 - Assembly Area
 - Assumed Safe Areas
Move to primary assembly area as soon as possible
 - Information

City of Cannon Beach, Oregon

163 E. Gower Ave
Cannon Beach, OR
97110
General Information Call: 503-436-1581
Office Hours 8 - 5 Monday - Friday



This map was made on July 7, 2015