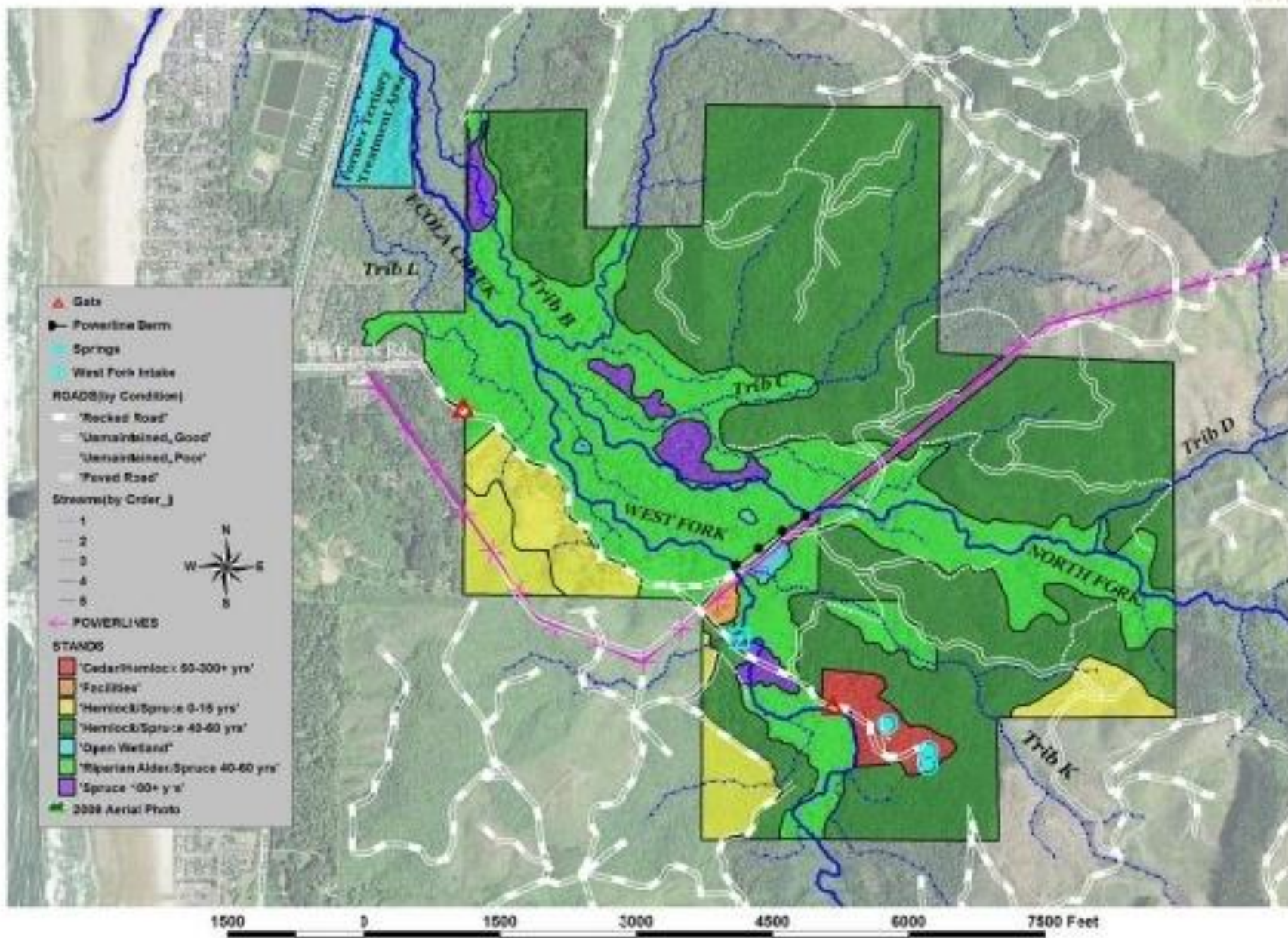

Ecola Creek Forest Reserve Management Plan Review

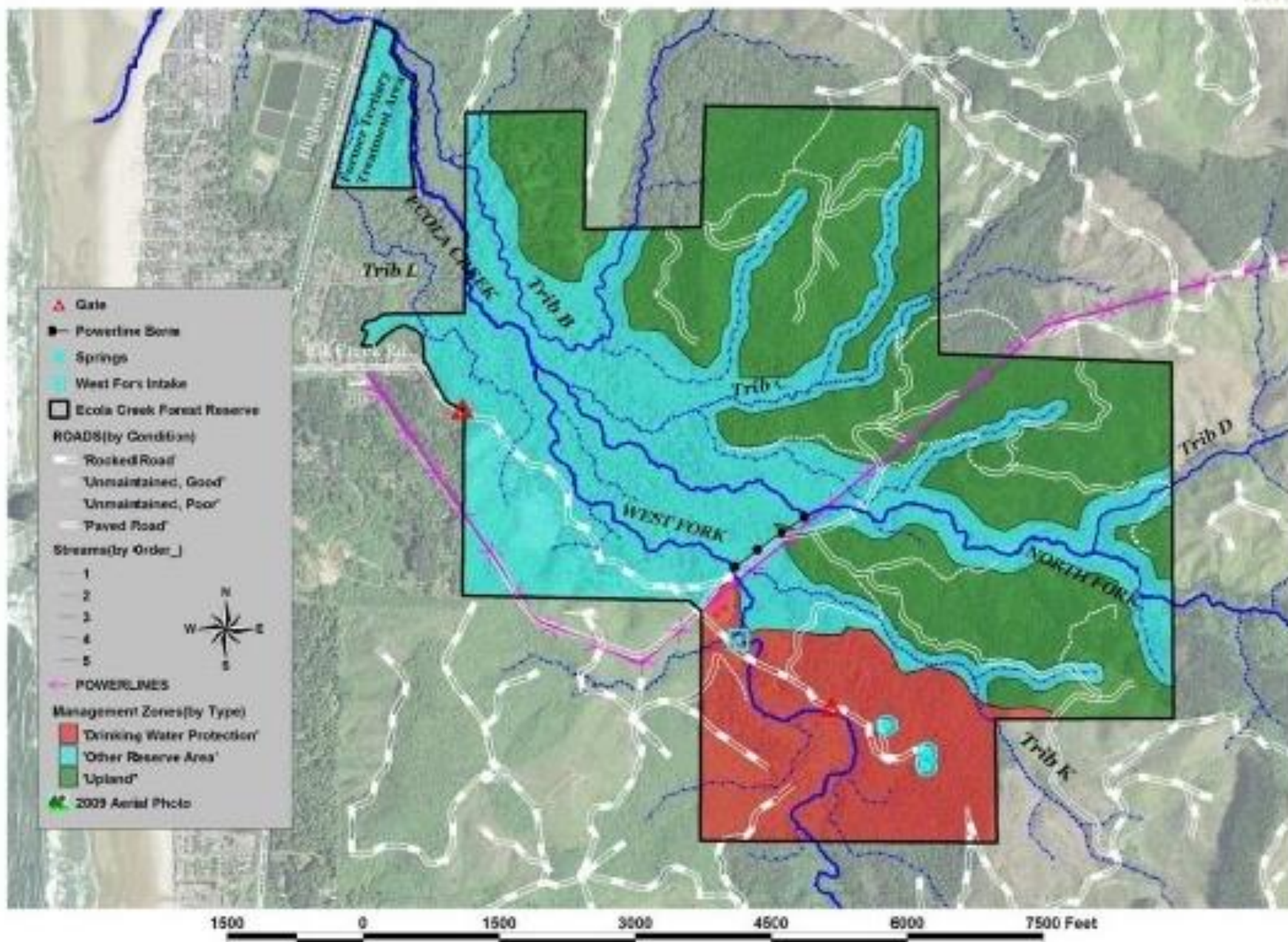


Barry Sims
August 16, 2018

Ecola Creek Forest Reserve - Forest Habitat Types



Ecola Creek Forest Reserve - Management Zones



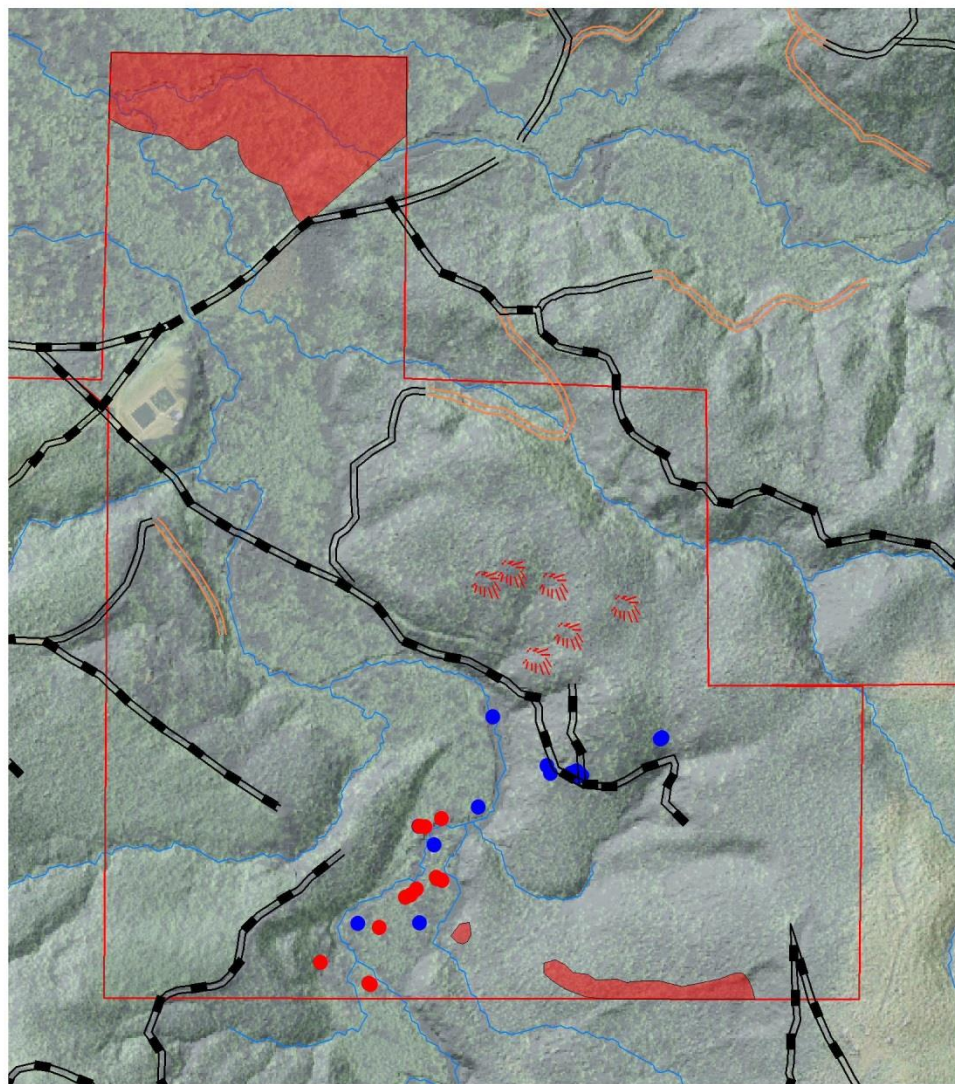
Review of progress

- Forest restoration
 - Fish habitat and water quality
 - Wildlife habitat
 - Public use and recreation
-

Forest restoration prior to 2012

- Cedar plantings

ECFR 2008-2010 Forest Restoration Projects



ROADS(by Condition)

- == 'Paved Road'
- == 'Rocked Road'
- == 'Unmaintained, Good'
- == 'Unmaintained, Poor'

2010 Cedar planting areas

2008 small cedar plantings

Ecola_Creek_Forest_Reserve

2008 Large Cedar plantings(by Fenced)

- 'N'
- 'Y'

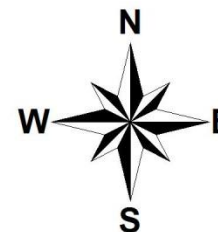
Streams

CLATSOP12.SID

ECOLA_BE.JPG

750 0 750 1500 2250 Feet

Scale = 1 : 750.00 (In : Feet)



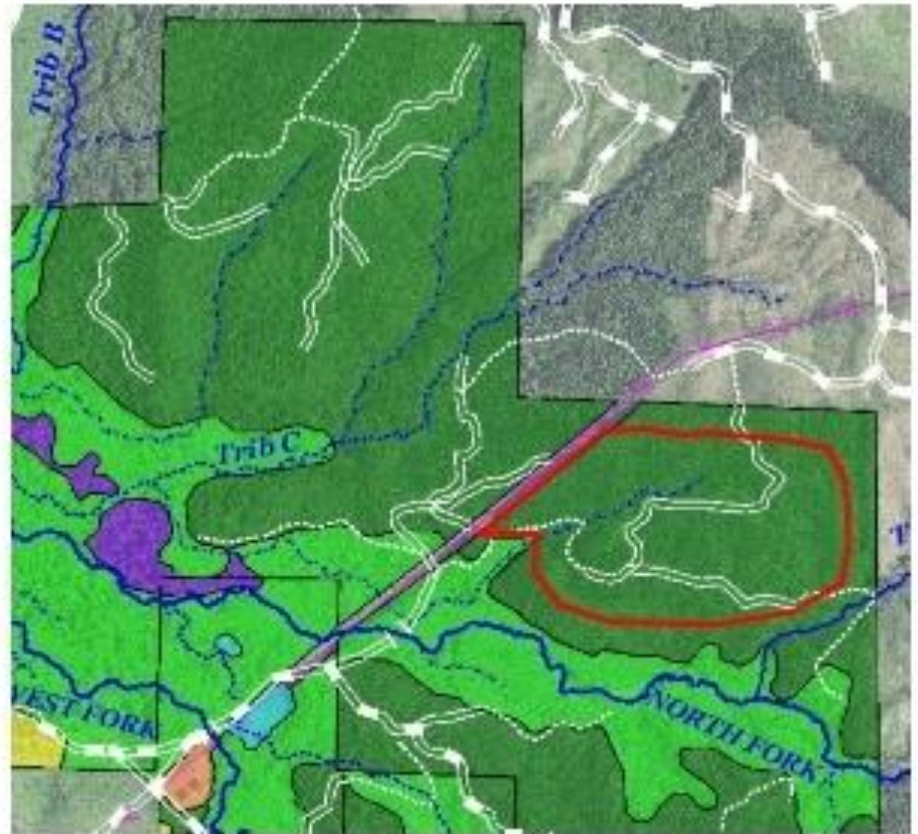
08-16-2018





Forest restoration

- 2013 thinning



2013 forest thinning

- Project produced 24 loads of logs, 84 MBF
 - Stopped at 30% completion due to rain
 - Break-even \$
-

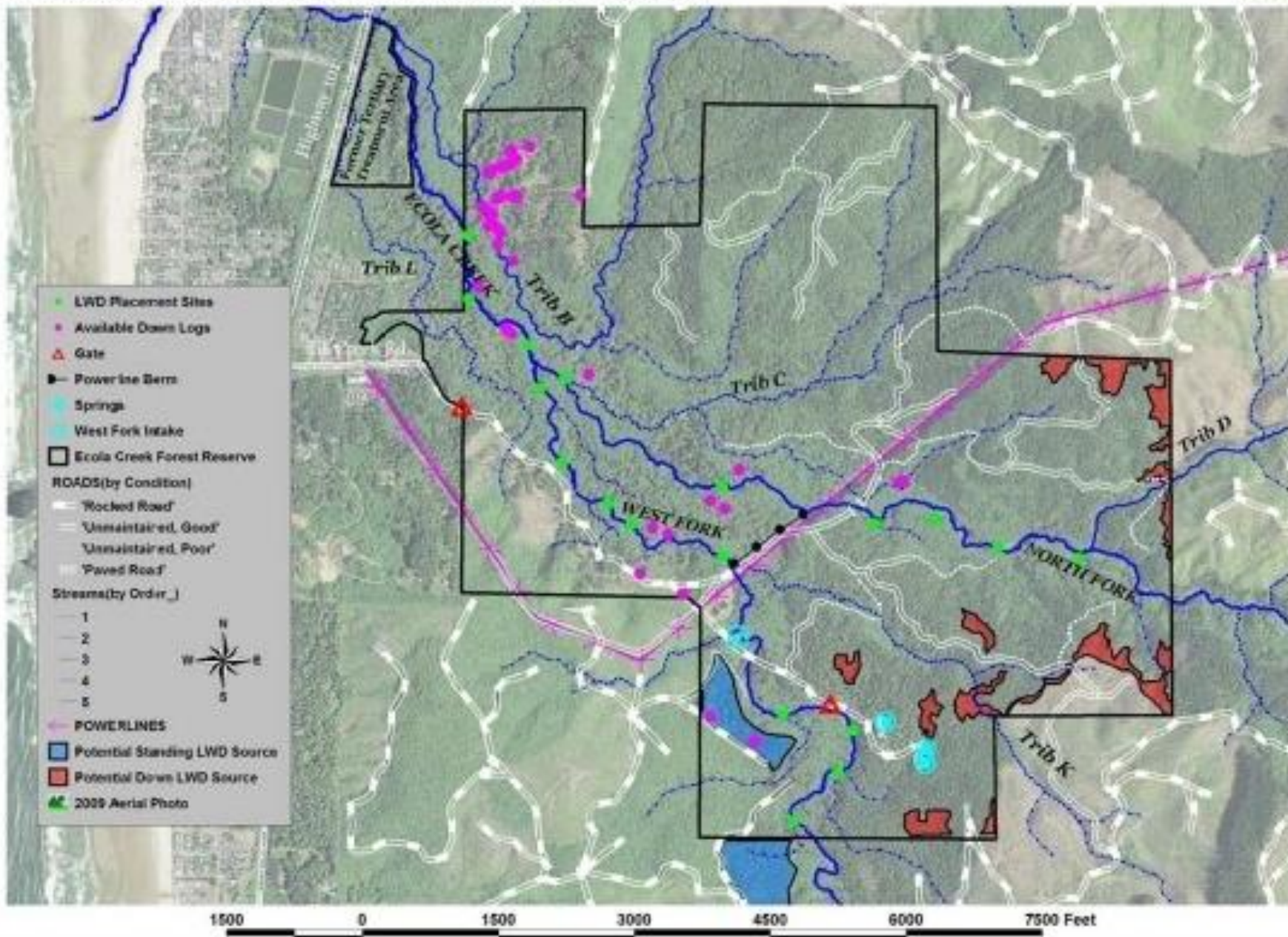




Fish habitat and water quality

- Large Woody Debris (LWD) project 2013
- Roads assessment

Ecola Creek Forest Reserve In-Stream Woody Debris Placement Opportunities



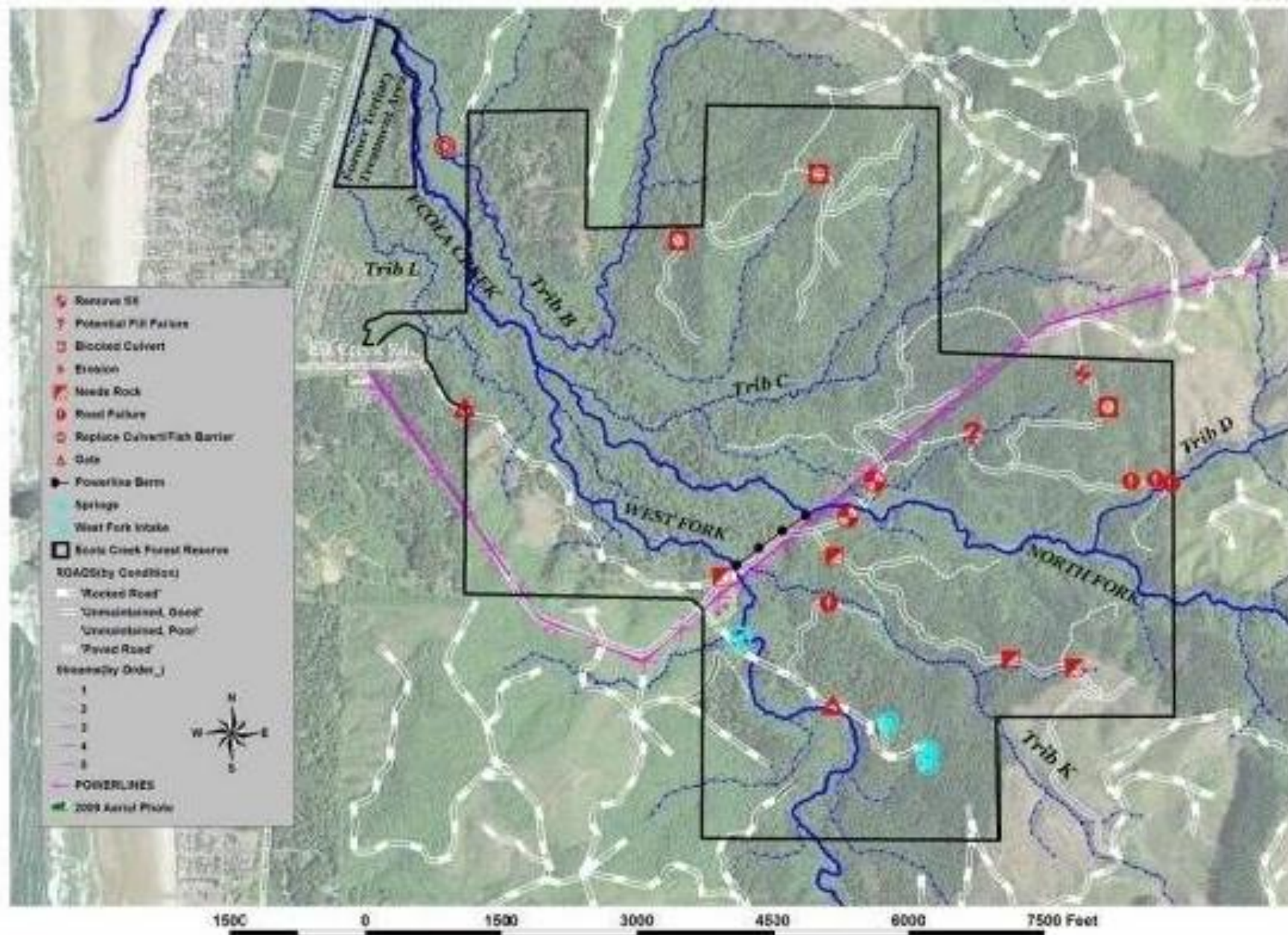






Roads and trails

Ecola Creek Forest Reserve - Road Improvement Opportunities



Ecola Creek Forest Reserve Slope Percentage

